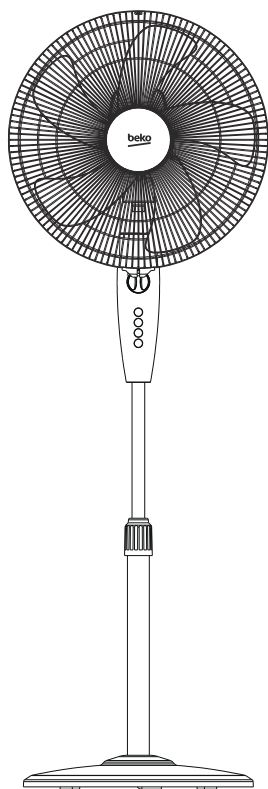


Stand fan

User Manual



EFS5100W

EN

beko

Please read this user manual first!

Dear Customer,

Thank you for preferring a Beko product. We hope that you get the best results from your product which has been manufactured with high quality and state-of-the-art technology. Therefore, please read this entire user manual and all other accompanying documents carefully before using the product and keep it as a reference for future use. If you handover the product to someone else, give the user manual as well. Follow all warnings and information in the user manual.

Meanings of the symbols

Following symbols are used in the various section of this manual:



Important information or useful hints about usage.



Warning for hazardous situations with regard to life and property.



Warning to actions that must never perform.



Warning for electric shock.



Warning for danger of fire.



Warning for hot surfaces.



This product has been produced in environmentally friendly, modern facilities

Complies with the WEEE Regulation.



CONTENTS

1	Safety instructions	4
2	Part figure	6
3	Assembly of chassis & column unit	7
4	Grill & fan blade assembly	8
5	Operating instruction	9
6	Other	10
6.1	Maintenance instruction.....	10
6.2	Cleaning.....	10
6.3	Technical data	10
7	Disposal	11

1 Safety instructions

Warning

Read rules for safe operation and instructions carefully.

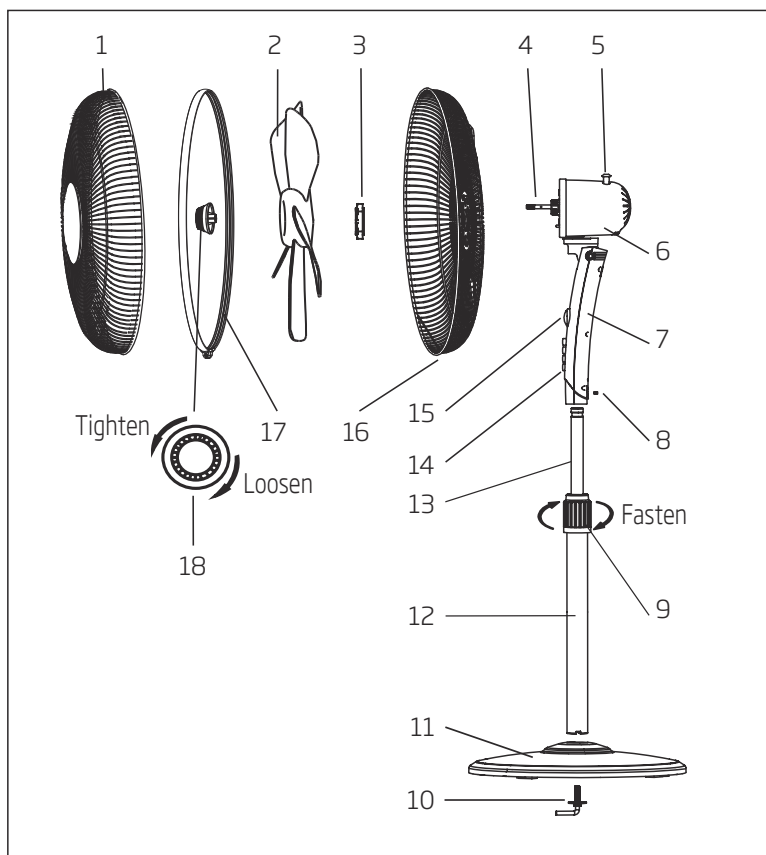
- If the supply cord is damaged, it must be replaced by manufacturer or its service agent or a similarly qualified person in order to avoid a hazard.
- To protect against the risk of electrical shock, do not immerse the unit, cord or plug in water or other liquid.
- This appliance can be used by children aged from 8 years and above and persons with reduced physical, sensory or mental capabilities or lack of experience and knowledge if they have been given supervision or instruction concerning use of the appliance in a safe way and understand the hazards involved. Children shall not play with the appliance. Cleaning and user maintenance shall not be made by children without supervision.
- When the appliance is not in use and before cleaning, unplug the appliance from the outlet.
- Keep electrical appliances out of reach from children or infirm persons. Do not let them use the appliances without supervision.
- When the fan was assembled, the rotor blade guard shall not be taken off anymore.
 - Prior cleaning unplug the fan.
 - The rotor guard shall not be disassembled/opened to clean the rotor blades.
 - Wipe the fan enclosure and rotor blade guard with a slightly damp cloth.

1 Safety instructions

Rules for safe operation

- Never insert fingers, pencils, or any other object through the grille when fan is running.
- Disconnect fan when moving from one location to another.
- Be sure fan is on a stable surface when operating to avoid overturning.
- Do not use fan in window, rain may create electrical hazard.
- Household use only.

2 Part figure



- | | |
|---------------------------|--------------------|
| 1. Front grill | 10. 7-shape bolt |
| 2. Fan blade | 11. Chassis |
| 3. Plastic nut | 12. Extension pole |
| 4. Motor shaft | 13. Internal pole |
| 5. Clutch knob | 14. Piano switch |
| 6. Motor housing | 15. Timer |
| 7. Fan body | 16. Rear grill |
| 8. Thumb screw | 17. Circlip |
| 9. Height adjustment ring | 18. Spinner |



Note: All the pictures in this manual are for explanation purpose only. Any discrepancy between the real object and the illustration in the drawing shall be subject to the real subject.

3 Assembly of chassis & column unit

1. Unscrew the 7-shape bolt from the extension pole. (Fig.1)
2. Insert the extension pole into the chassis and tighten the 7-shape bolt (Fig.2)
3. From the extension pole loosen the height adjustment ring and adjust the internal pole to the desired height.

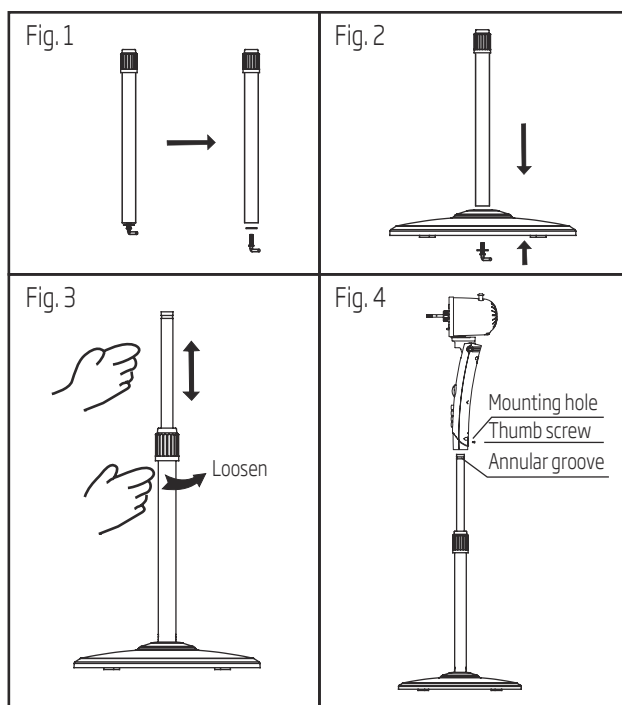


Note: If you can't find the internal pole, it must be inside the extension pole. You can pull it out from the extension pole. (Fig.3)

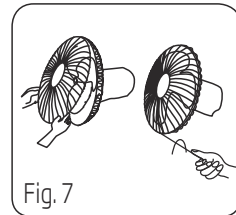
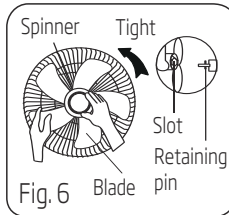
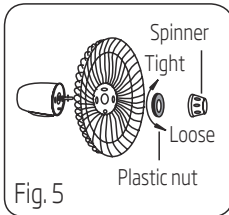
4. To attach the head unit to the internal pole, loosen the thumb screw on the bottom of the head unit. Place the head unit on the internal pole and tighten the thumb screw in alignment with the groove on the internal pole. (Fig.4)



Warning: Height adjustment ring must be fully fastened before the assembly of the motor section to the internal pole.



1. Unscrew the spinner clockwise (or take the spinner out from the bag) and the plastic nut counterclockwise to remove both of them. Fix the rear grill to the motor then tighten the plastic nut again. (Fig. 5)
2. Insert the blade into shaft, and make sure the rotor shaft pin is fitted into groove of the blade. Turn the spinner counterclockwise to tighten the blade. (Fig. 6)
3. Fasten the front grill and the rear grill by the grill clip and then tighten the fan grill locking screw and nut. (Fig. 7)



5 Operating instruction

1. Speed control

Speed is controlled by the piano switch:

0---Off 1---Low 2---Medium 3---High

2. Automatic 120-minute timer

Turn the knob of time switch to the right and set the time, the timer switch is cut at the time within 120 minutes. In case the time switch is not use, set the time switch to "On".

3. Oscillation control

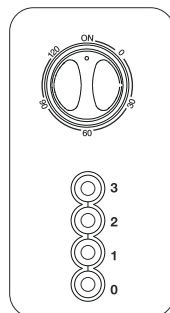
To make the fan oscillate, press the clutch knob located on the top of the motor housing. To get the directional airflow, pull the clutch knob up to its initial position.

4. Tilt adjustment

To adjust the air flow upward or downward, push the grilles lightly to the desired direction.

5. Height adjustment

The height of the fan can be adjusted by loosening the height adjustment ring carefully raising or lowering the fan and firmly re-tightening the height adjustment ring.



6.1 Maintenance instruction

The fan requires little maintenance. Do not try to fix it by yourself. Refer it to qualified service personnel if service is needed.

1. Before cleaning and assembling, fan must be unplugged.
2. To ensure adequate air circulation to the motor, keep vents at the rear of the motor free of dust.
Do not disassemble the fan to remove dust.
3. Please wipe the exterior parts with a soft cloth soaking a mild detergent.
4. Do not use any abrasive detergent or solvents to avoid scratching the surface. Do not use any of the following as a cleaner: gasoline, thinner.
5. Do not allow water or any other liquid into the motor housing or interior parts.

6.2 Cleaning

1. Be sure to unplug from the electrical supply source before cleaning.
2. Plastic parts should be cleaned with a soft cloth moisten with mild soap. Thoroughly remove soap film with dry cloth.

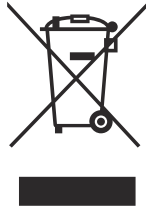
6.3 Technical data

Power supply: 220V-240V, 50Hz

Technical and design modifications reserved.



Note: Do not dispose of electrical appliances as unsorted municipal waste, use separate collection facilities. Contact your local government for information regarding the collection systems available. If electrical appliances are disposed of in landfills or dumps, hazardous substances can leak into the groundwater and get into the food chain, damaging your health and well-being.



Information			
Description	Symbol	Value	Unit
Maximum fan flow rate	F	55.3	m ³ /min
Fan power input	P	50	W
Service value	SV	1.11	(m ³ /min)/W
Standby power consumption	P _{SB}	0	W
Fan sound power level	L _{WA}	63	dB(A)
Maximum air velocity	C	2.83	meters/sec
Measurement standard for service value	IEC 60879: 1986+ (corr. 1992)		
Contact details for obtaining more information	Arcelik: Arcelik A.S. Sutluce, Karaagac Cd. 2, 34445 Beyoglu Istanbul Turkey		

